

# F19374

## High Performance Single Stage Power Line Filter



Model F19374-2S Shown

### F19374 High Performance Single Stage EMI Filter

## Features

The LCR F19374 Filter is designed to bring Excelsys XF Modular Power Supply Platform and the Excelsys Xsolo Platform to compliance with MIL-STD 461F, CE101 and CE102 conducted emissions under various loads.

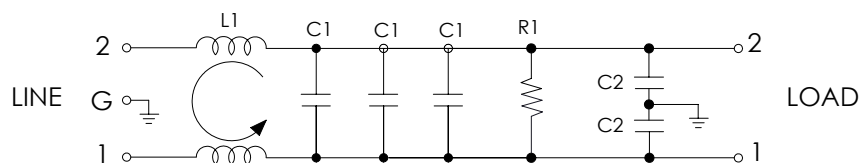


LCR Electronics EMI Filter capabilities can help your products meet all requirements and achieve “Mission Success” in the ultimate application.

We are a uniquely integrated company for advanced design, engineering, manufacturing, testing and technical support.

LCR Specializes in the design and manufacture of EMI Filters and suppression components, as well as a variety of EMC testing, engineering and contract manufacturing services. We have expertise in appliance, defense and aerospace, commercial, industrial, telecommunication and medical markets.

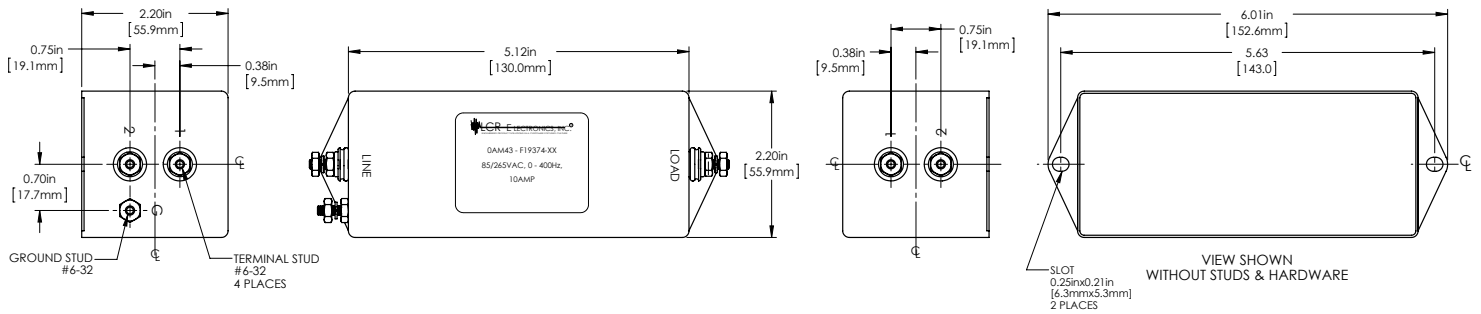
Operating Frequency	DC - 400Hz	
Rated Voltage	85 - 265 VAC, 300 VDC	
Rated Current	10 AMP	
Ambient Temperature	-55° to 85°C	
I/O Terminations	F19374-2 F19374-2S F19374-2C	Quick Disconnect Tabs Threaded Studs MIL Connectors.
Material	CRS 20 GA./0.034 Per ASTM A 366	
Plating	Tin Plate Per ASTM B 545	



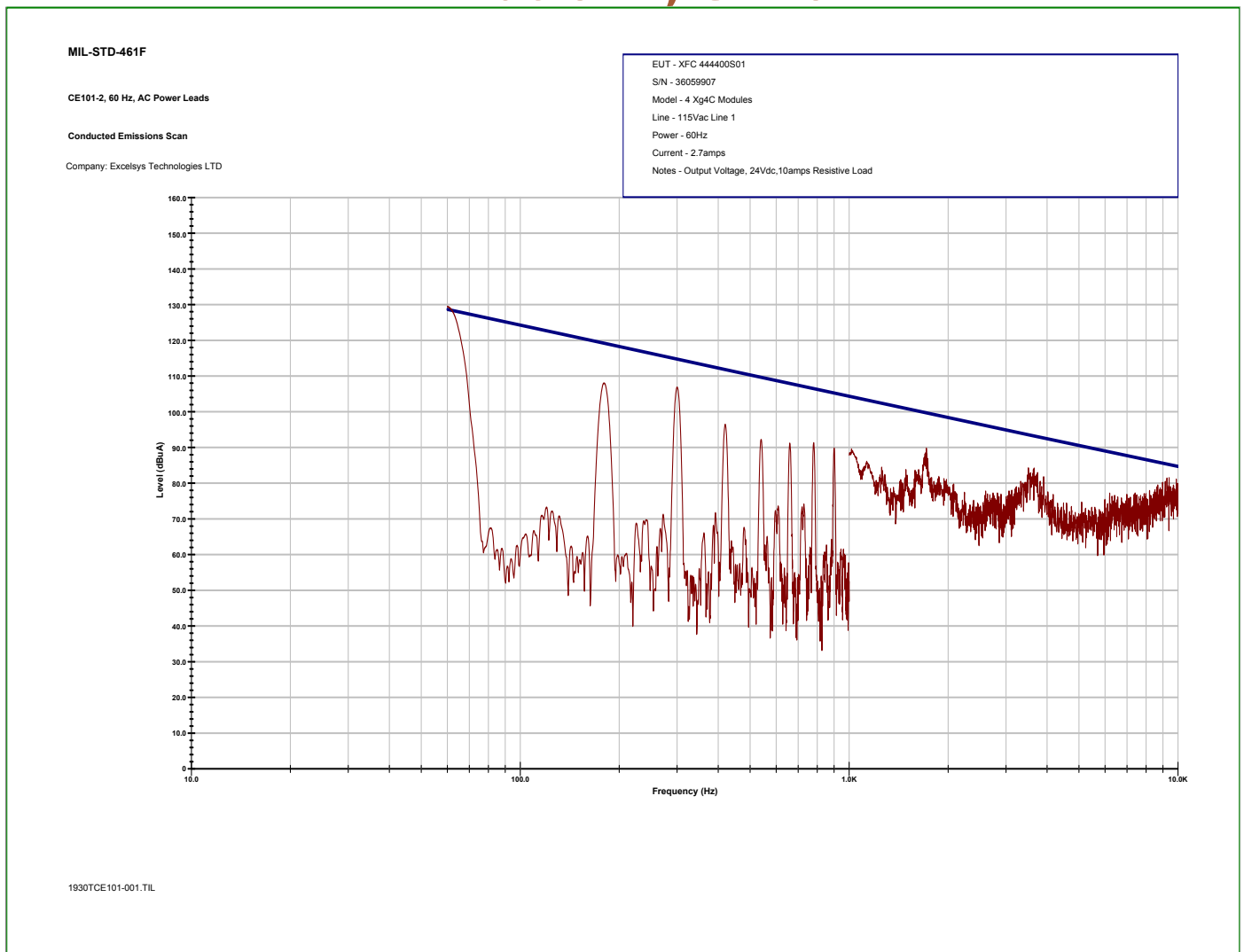
ELECTRICAL SCHEMATIC  
F19374

# F19374

# Technical Specifications

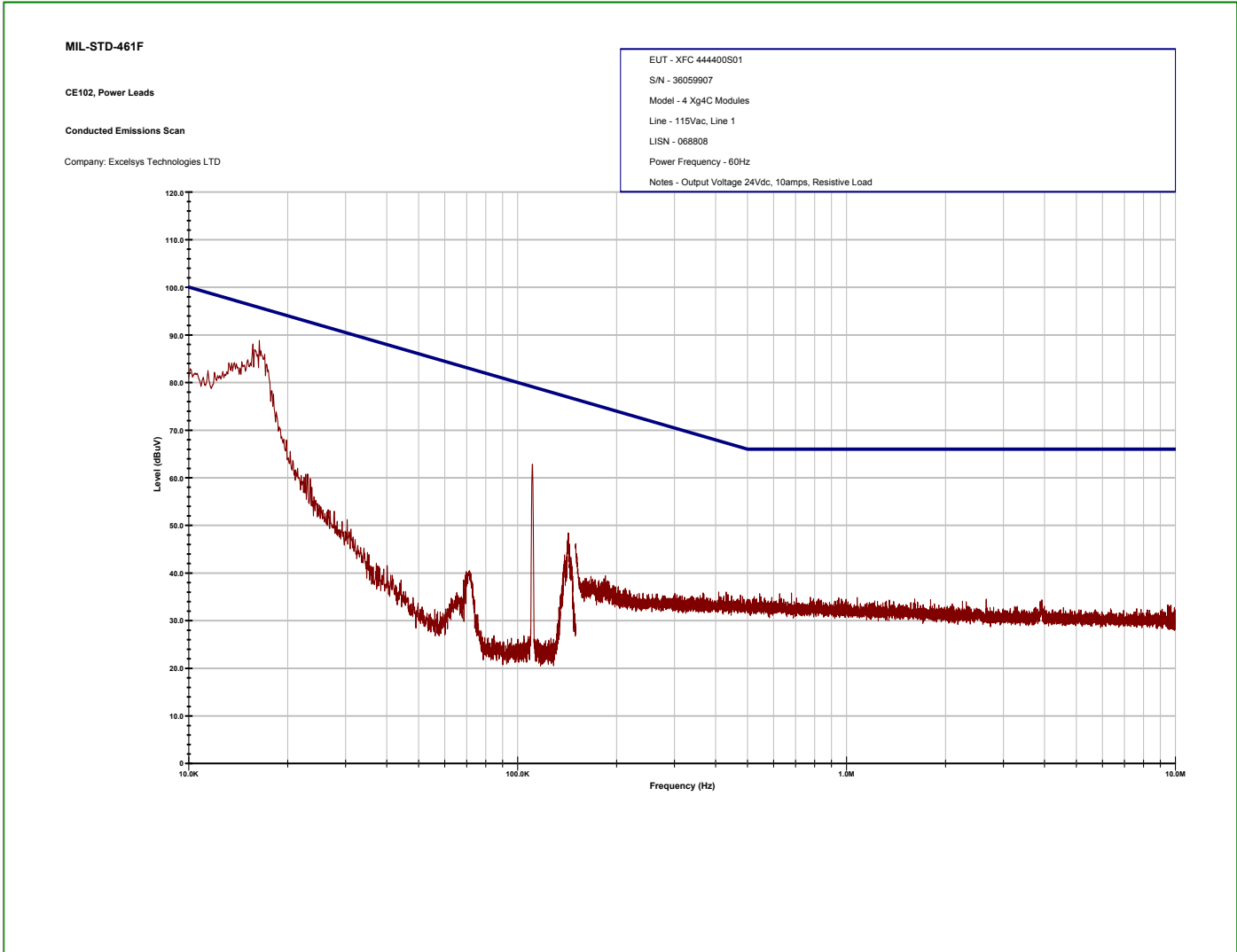


## Test Results XF Platform, CE 101



# Test Results

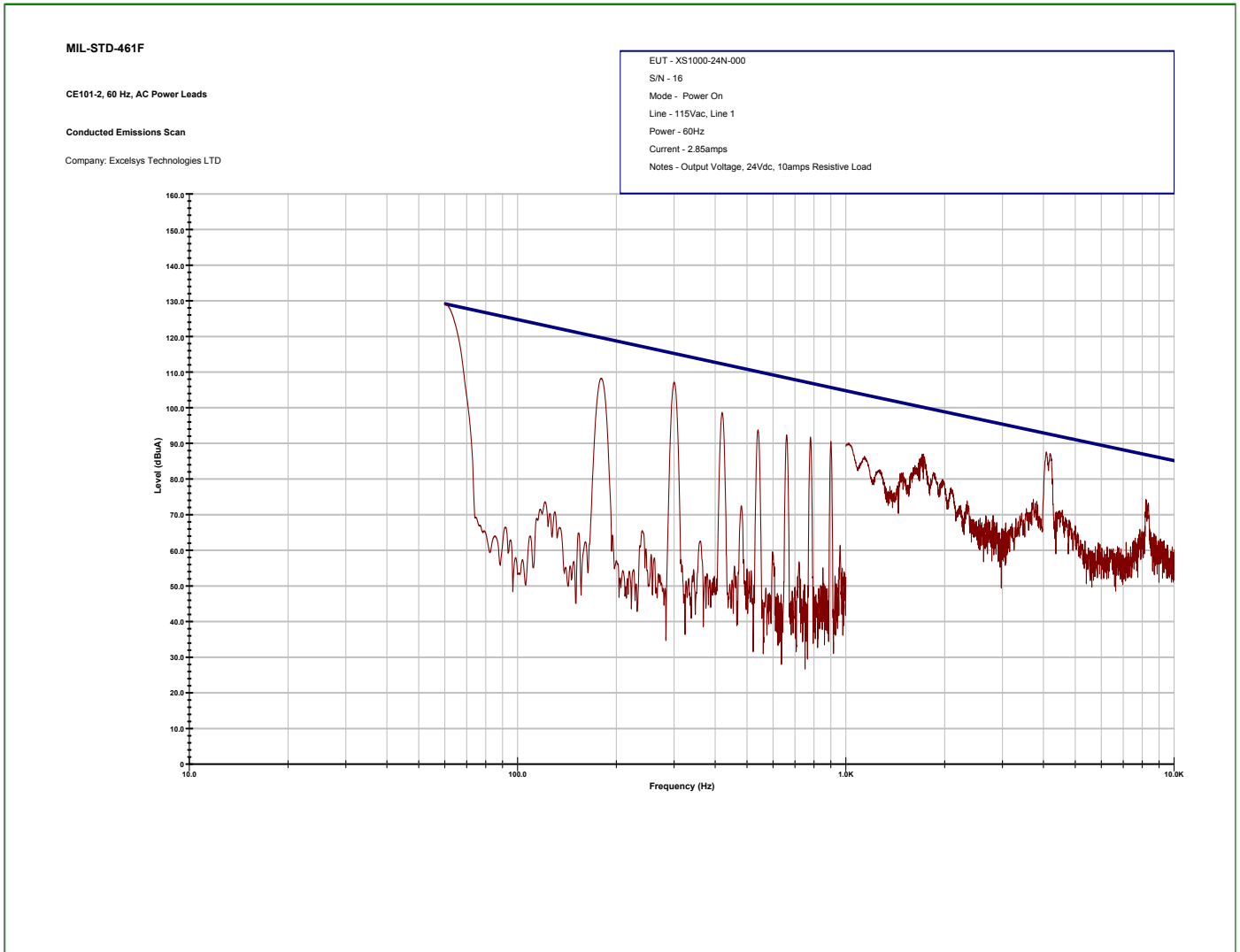
## XF Platform, CE 102



F19374

# Test Results

## Xsolo Platform, CE 101



F19374

# Test Results

## Xsolo Platform, CE 102

